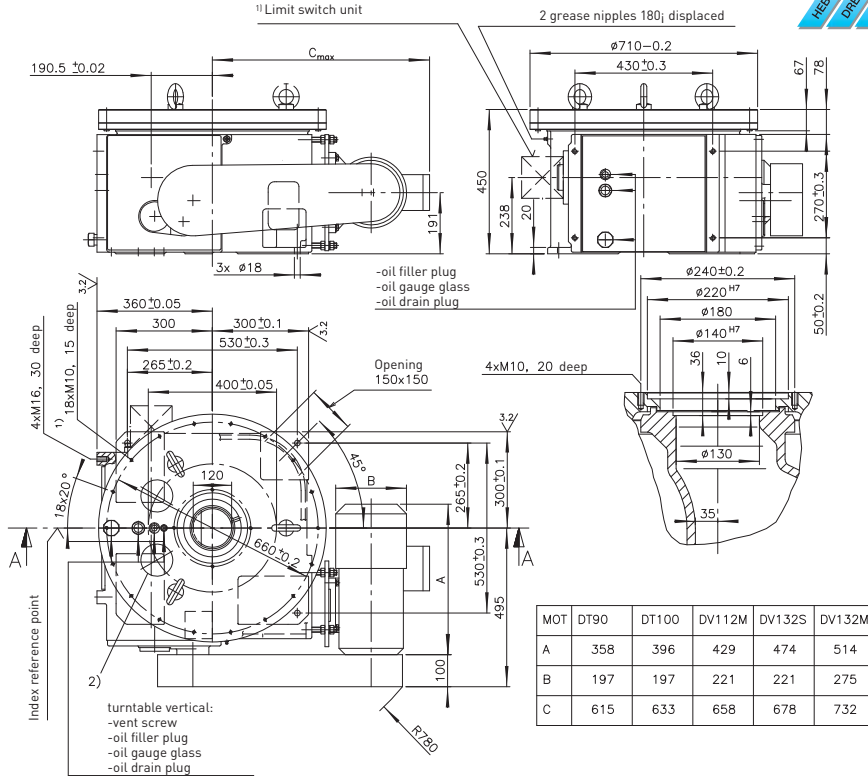


EDS710/A4388



Precision index drives for rotary motions



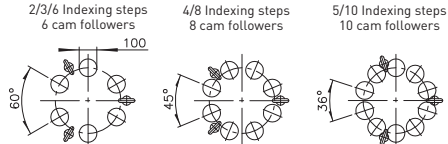
MOT	DT90	DT100	DV112M	DV132S	DV132M
A	358	396	429	474	514
B	197	197	221	221	275
C	615	633	658	678	732

For transportation of the turntable with eyebolts, 3 tapped holes M24x40 deep have been arranged on \angle 460.

¹⁾ For the dimensions of limit switch units, accessories or special design, please ask for a separate drawing.

⁴⁾ Standard fixing hole pattern. Special hole pattern at extra price on request.

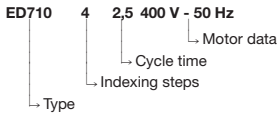
²⁾ Location of the cam followers at the index reference point
[Free areas must be provided accordingly in the tool plate]



Technical data

Static bearing capacity of table plate bearing
(theoretic factors of the bearing manufacturer)
 $C_{OA} = 630000 \text{ N}$
 $C_{OR} = 29000 \text{ N}$
 $C_{OM} = 89000 \text{ Nm}$
 Permissible resulting tangential moment, due to process related forces incurred while the table plate is at standstill: $M_t = 4400 \text{ Nm}$

Order example:



Indexing steps Standard indexing steps: 2,3,4,5,6,8,10 further indexing steps on request

Tool plate Mounting of tool plate see drwg.

Accuracy order: ± 36 angular seconds
High-precision performance upon request

Total weight approx. 590-680 kg (depending on size of motor)

Motor C-flange motor to requirements

Remark This type range permits the construction of special models with different technical data. In order to prepare a detailed offer, we would need exact technical information.